

October 2010

**2009 Canadian Community Health Survey:
A Summary of Health Estimates for NBPSDHU**



Report Production Team

Lead Authors:

Louise Gagné, Epidemiologist, Planning & Evaluation Services
Casey Hirschfeld, Student Research Assistant, Planning & Evaluation Services
Chris Bowes, Research and Policy Analyst, Planning & Evaluation Services

Support:

John Mitchell, Research Assistant, Planning & Evaluation Services

For more information, please contact:

Chris Bowes
North Bay Parry Sound District Health Unit
681 Commercial Street
North Bay, Ontario P1B 4E7
CANADA
Phone: (705) 474-1400 ext. 2318
Toll Free: 1-800-563-2808
Fax: (705) 474-8252

Suggested Citation:

North Bay Parry Sound District Health Unit (2010). 2009 Canadian Community Health Survey: A Summary of Health Estimates for NBPSDHU. North Bay, ON: NBPSDHU.

What is the Canadian Community Health Survey (CCHS)?

A cross-sectional survey conducted by Statistics Canada that collects information related to the health status of Canadians, the factors determining their health status and their use of health care services. The CCHS is completed directly by survey respondents aged 12 years or older. Residents of Indian Reserves and Crown Lands, health care institutions, some remote areas, and full-time members of the Canadian Forces are excluded from completing the survey.^[1]

How frequently is the CCHS conducted?

Between 2001 and 2007, data collection occurred every two years (2001, 2003, 2005, and 2007). As of 2007, data collection now occurs every year.^[1]

How are survey respondents chosen?

Statistics Canada selects households using various sampling techniques. Once a household has been chosen a member aged 12 years or older from that household will then be selected to complete the survey. The decision as to which member is selected is determined by statistical methods based on age and household composition.^[1]

Does the CCHS provide data at a health region level?

The CCHS is designed to provide reliable estimates at the health region level as well as at a provincial, territorial and national level. A sample of 65,000 respondents nation wide is required to complete the survey every year in order to achieve this.^[1]

How is CCHS data used?

It is primarily used for health surveillance and population health research. Public Health Units use the information to monitor, plan, implement, and evaluate programs to improve the health of the population they serve.^[1]

For more information: Go to the Statistics Canada website (www.statcan.gc.ca).

SUMMARY

On June 15, 2010 Statistics Canada released estimates (data) on 28 health indicators collected from the 2009 Canadian Community Health Survey (CCHS). This report provides a summary of estimates for selected health system performance and health status indicators for the North Bay Parry Sound District Health Unit (NBPSDHU) region. Where possible, comparisons have been made between 2009 data and previous CCHS cycles (2003, 2005, 2007, and 2008), as well as between the NBPSDHU region, the North East Local Health Integration Network (NE LHIN), and Ontario (see Appendix A for map of geographic areas).

Data Sources & Interpretation

- The data used within this report was extracted from Statistics Canada, Canadian Community Health Survey (CCHS) indicator profile, CANSIM table 105-0501.
- The term “significant” is used within this report to describe differences between health regions or time periods that are statistically meaningful. Without statistical significance you cannot say with certainty that the differences are real, or simply due to chance.
- Sampling variability associated with each health status estimate is described using 95% confidence intervals (95% CI). These intervals give an indication of the precision of the estimate, and are used to determine if differences between values are significant.

TABLE OF CONTENTS

1.0 HEALTH SYSTEM PERFORMANCE	2
1.1 Influenza Immunization	2
1.2 Regular Medical Doctor	2
2.0 WELL-BEING.....	3
2.1 Perceived Health	3
2.2 Perceived Mental Health	3
2.3 Perceived Life Stress	3
3.0 HUMAN FUNCTION	4
3.1 Functional Health.....	4
3.2 Participation and Activity Limitation	4
4.0 HEALTH CONDITIONS.....	5
4.1 High Blood Pressure	5
4.2 Diabetes.....	6
4.3 Overweight and Obesity.....	7
4.4 Pain or Discomfort by Severity.....	8
4.5 Pain or Discomfort that Prevents Activities.....	8
5.0 HEALTH BEHAVIOURS.....	9
5.1 Smoking.....	9
5.2 Fruit and Vegetables Consumption	10
5.3 Physical Activity.....	10
5.4 Heavy Drinking.....	11
6.0 ENVIRONMENTAL FACTORS	12
6.1 Exposure to second-hand smoke at home	12
6.2 Exposure to second-hand smoke in vehicles & public places	13
REFERENCES	13
APPENDIX A.....	14

DEFINITIONS

Influenza immunization:

Population aged 12 and over who reported the date of their last influenza immunization as being less than one year ago. The 2009 data on flu shots may include H1N1 vaccines received in the Fall of 2009. ^[2]

Has a regular medical doctor:

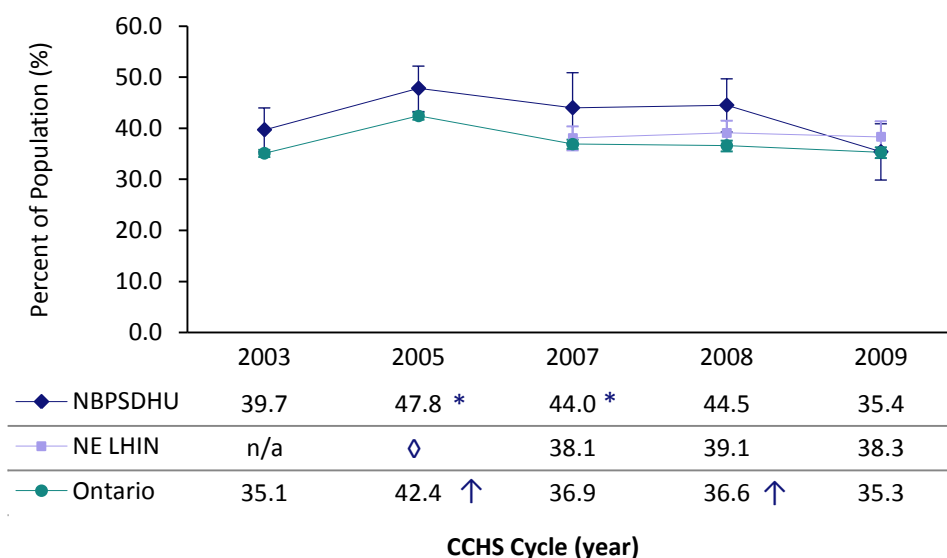
Population aged 12 and over who reported that they have a regular medical doctor. ^[2]

1.0 HEALTH SYSTEM PERFORMANCE

1.1 Influenza Immunization

- In 2009, 35.4% of the NBPSDHU region population (aged 12 years and over) reported receiving influenza immunization less than one year ago (see Figure 1). This is similar to the percentage for Ontario (35.3%). In the NBPSDHU region, the percentage of the population immunized for influenza less than one year ago decreased by almost 10% compared to 2008, but not significantly.
- In the NBPSDHU region, 78.7% of the population aged 65 years and over reported receiving influenza immunization less than one year ago. This rate is higher than for Ontario (71.5%) and the NE LHIN (72.5%), but not significantly.

Figure 1. Percent of population (95% CI) aged 12 and over who reported the date of their last influenza immunization as being less than one year ago.



Data Source: Statistics Canada. 2010. *Health indicator profile*. CANSIM Table 105-0501. Released June 15, 2010. (accessed June 21, 2010).

↑ Rate is significantly higher than Ontario.

↓ Rate is significantly lower than Ontario.

* Rate is significantly different from previous survey cycle.

n/a 2003 CCHS estimate not available for Local Health Integration Networks (LHINs).

◇ 2005 CCHS estimate no longer available for Local Health Integration Networks (LHINs).

1.2 Regular Medical Doctor

- In 2009, 89.4% of the NBPSDHU region population (aged 12 years and over) reported having a regular medical doctor. A similar statistic was reported for Ontario (91.5%).
- The percentage of the population with a regular medical doctor was significantly lower in the NE LHIN (86.0%) compared to Ontario in 2009.

DEFINITIONS

Perceived health:

Population aged 12 and over who reported perceiving their own health status as being either very good or excellent. It is an indicator of overall health status and can reflect aspects of health not captured in other measures.^[2]

Perceived mental health:

Population aged 12 and over who reported perceiving their own mental health status as being either very good or excellent.^[2]

Perceived life stress:

Population aged 15 and over who reported perceiving that most days in their life were quite a bit or extremely stressful. It refers to the amount of stress in the person's life, on most days, as perceived by the person or, in case of proxy response, by the person responding.^[2]

2.0 WELL-BEING

2.1 Perceived Health

- In 2009, 58.5% of the population (aged 12 years and over) in the NBPSDHU region reported perceiving their own health status as very good or excellent; which was similar to Ontario (61.2%) and the NE LHIN (58.6%).
- For the population aged 65 years and over, 44.4% in the NBPSDHU region reported perceiving their own health status as very good or excellent. This was similar to Ontario (42.0%) and the NE LHIN (40.5%).

2.2 Perceived Mental Health

- In 2009, 78.3% of the population (aged 12 years and over) in the NBPSDHU region reported perceiving their own mental health as very good or excellent.
- The rate is higher than the percentage for Ontario (74.0%) and the NE LHIN (75.2%), but the difference is not statistically significant.

2.3 Perceived Life Stress

- For the population aged 15 years and over, 27.9% in the NBPSDHU region perceived they had quite a lot of stress in their lives. This is higher than the percentage for Ontario (24.3%) and the NE LHIN (20.1%), but the difference is not statistically significant.
- In 2009, the age groups reporting the highest percentage of perceived life stress in the NBPSDHU region were 35-44 and 45-64 years.

DEFINITIONS

Functional Health:

Population aged 12 and over reporting measures of overall functional health, based on 8 dimensions of functioning (vision, hearing, speech, mobility, dexterity, feelings, cognition, and pain).^[2]

Participation and Activity Limitation:

Population aged 12 and over who reported being either sometimes or often limited in selected activities (home, school, work and other) because of a physical condition, mental condition, or other health problem which has lasted or is expected to last six months or longer.^[2]

3.0 HUMAN FUNCTION

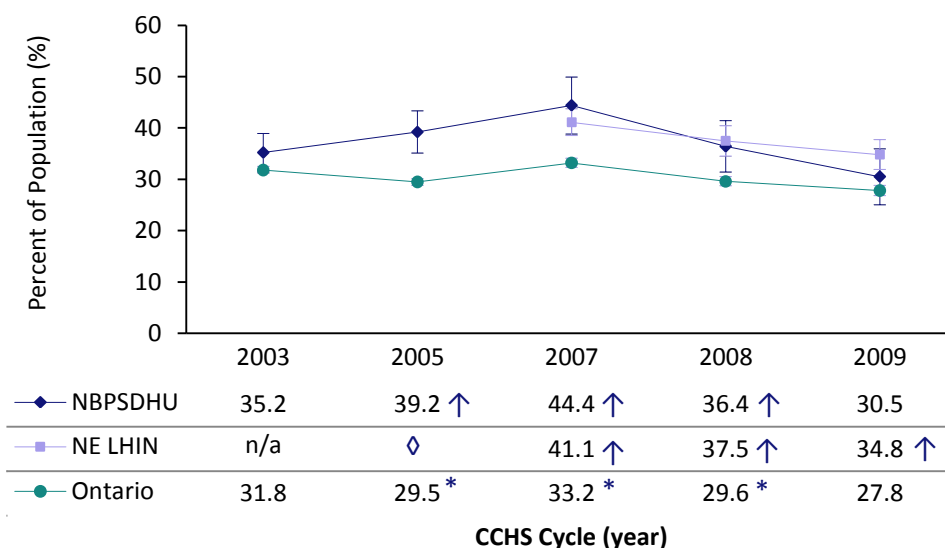
3.1 Functional Health

- In 2009, 77.9% of the population (aged 12 years and over) in the NBPSDHU region reported having good to full functional health; which was similar to Ontario (80.0%) and the NE LHIN (76.3%).
- The percentage of the population reporting good to full functional health was significantly lower in the NE LHIN compared to Ontario.

3.2 Participation and Activity Limitation

- For the population aged 12 years and over, 30.5% in the NBPSDHU region reported being either sometimes or often limited in selected activities (see Figure 2). This is higher than the percentage for Ontario (27.8%), but the difference is not statistically significant.
- The percentage of the population reporting a limitation in selected activities was significantly higher in the NE LHIN (34.8%) compared to Ontario.

Figure 2. Percent of population (95% CI) aged 12 and over who reported being limited in selected activities.



Data Source: Statistics Canada. 2010. *Health indicator profile*. CANSIM Table 105-0501. Released June 15, 2010. (accessed June 21, 2010).

↑ Rate is significantly higher than Ontario.

↓ Rate is significantly lower than Ontario.

* Rate is significantly different from previous survey cycle.

n/a 2003 CCHS estimate not available for Local Health Integration Networks (LHINs).

◇ 2005 CCHS estimate no longer available for Local Health Integration Networks (LHINs).

DEFINITIONS

High blood pressure:

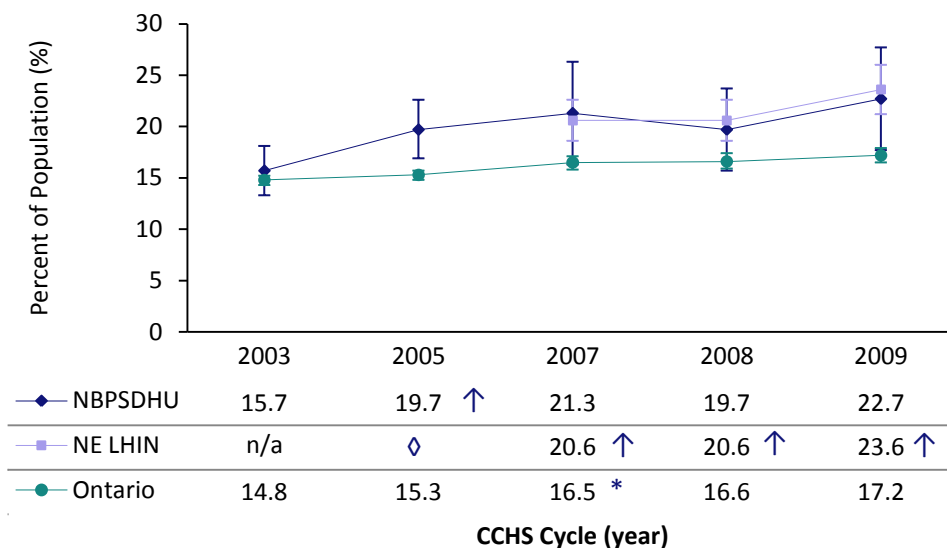
Population aged 12 and over who reported that they have been diagnosed by a health professional as having high blood pressure.^[2]

4.0 HEALTH CONDITIONS

4.1 High Blood Pressure

- In 2009, 22.7% of the population aged 12 years and over in the NBPSDHU region reported being diagnosed as having high blood pressure (see Figure 3). This rate is higher compared to the rate for 2008 (19.7%), but not significant.
- The 2009 rate for the NBPSDHU region is higher compared to Ontario (17.2%), but the difference is not statistically significant.
- The percentage for the NE LHIN, at 23.6%, is significantly higher than Ontario.

Figure 3. Percent of population (95% CI) aged 12 and over who reported to have been diagnosed by a health professional as having high blood pressure.



Data Source: Statistics Canada. 2010. *Health indicator profile*. CANSIM Table 105-0501. Released June 15, 2010. (accessed June 21, 2010).

↑ Rate is significantly higher than Ontario.

↓ Rate is significantly lower than Ontario.

* Rate is significantly different from previous survey cycle.

n/a 2003 CCHS estimate not available for Local Health Integration Networks (LHINs).

◇ 2005 CCHS estimate no longer available for Local Health Integration Networks (LHINs).

DEFINITIONS

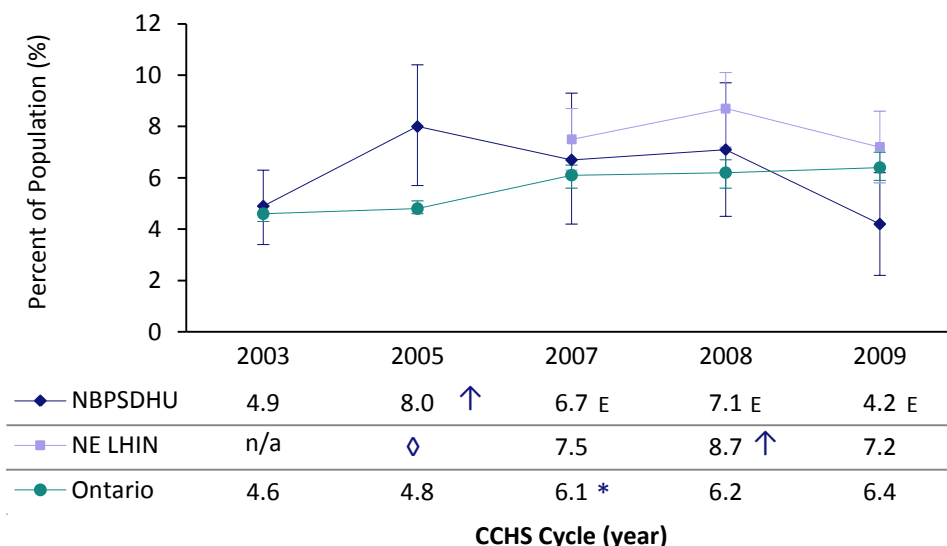
Diabetes:

Population aged 12 and over who reported that they had been diagnosed by a health professional as having diabetes (either type I or type II). Also includes females 15 and over who reported that they have been diagnosed with gestational diabetes.^[2]

4.2 Diabetes

- In 2009, 4.2% of the population aged 12 years and over in the NBPSDHU region reported being diagnosed as having diabetes (see Figure 4). The percent of the population diagnosed with diabetes is lower than it was in 2008 (7.1%), but the difference is not statistically significant. This rate does not differ from Ontario (6.4%) or the NE LHIN (7.2%).
- In Ontario, the percentage of the population diagnosed with diabetes has significantly increased from 4.8% in 2005 to 6.4% in 2009.

Figure 4. Percent of population (95% CI) aged 12 and over who reported that they had been diagnosed by a health professional as having diabetes.



Data Source: Statistics Canada. 2010. *Health indicator profile*. CANSIM Table 105-0501. Released June 15, 2010. (accessed June 21, 2010).

↑ Rate is significantly higher than Ontario.

↓ Rate is significantly lower than Ontario.

* Rate is significantly different from previous survey cycle.

E Use with caution.

n/a 2003 CCHS estimate not available for Local Health Integration Networks (LHINs).

◇ 2005 CCHS estimate no longer available for Local Health Integration Networks (LHINs).

DEFINITIONS

Adult overweight or obese:

Population aged 18 years or older who have a calculated body mass index of 25 or more. Body mass index is calculated by dividing the respondent's body weight (in kilograms) by their height (in metres) squared.^[2]

Adult overweight:

Population aged 18 years or older who have a calculated body mass index of between 25 and 29.9. Body mass index is calculated by dividing the respondent's body weight (in kilograms) by their height (in metres) squared.^[2]

Adult obese:

Population aged 18 years or older who have a calculated body mass index of 30 or more. Body mass index is calculated by dividing the respondent's body weight (in kilograms) by their height (in metres) squared.^[2]

Interesting Fact:

Research^[3,4] has shown that the use of self-reported height and weight data results in lower estimates of the prevalence of obesity, compared with measured values of height and weight.

In a recent study by Shields^[4], the prevalence of obesity was 9 % points higher among men, and 6 % points higher among females when using measured values of height and weight versus self-report data.

4.3 Overweight and Obesity

- In 2009, two thirds (66.7%) of the adult population (aged 18 years and over) in the NBPSDHU region was categorized as either overweight or obese based on self-reported measures of height and weight (see Table 1). This rate is significantly higher than for Ontario (51.4%).

Table 1. Percent of adult population (95% CI) aged 18 years and over in the NBPSDHU region categorized as overweight or obese.

Body Mass Index (BMI) Category	2003	2005	2007	2008	2009
Overweight or Obese (combined)	57.0 (52.6, 61.3)	58.6 ↑ (54.1, 63.1)	55.3 (49.0, 61.6)	57.9 (51.8, 64.0)	66.7 ↑ (58.7, 74.8)
Overweight	37.2 (32.8, 41.6)	36.8 (32.6, 41.1)	34.3 (28.7, 39.9)	40.1 (34.3, 45.9)	38.3 (27.5, 49.1)
Obese	19.8 ↑ (16.2, 23.4)	21.8 ↑ (17.5, 26.0)	21.0 (15.9, 26.0)	17.8 (13.0, 22.7)	28.4 ↑ (21.0, 35.9)

Data Source: Statistics Canada. 2010. *Health indicator profile*. CANSIM Table 105-0501. Released June 15, 2010. (accessed June 21, 2010).

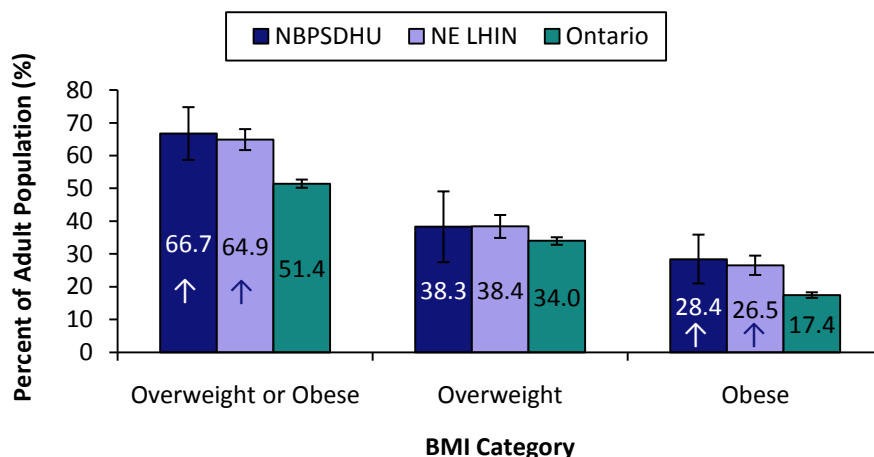
↑ Rate is significantly higher than Ontario.

↓ Rate is significantly lower than Ontario.

* Rate is significantly different from previous survey cycle.

- Almost 30% of the NBPSDHU adult population in 2009 was categorized as obese (see Figure 5). This rate is significantly higher than for Ontario (17.4%).
- Within the NE LHIN the percentage of the adult population overweight or obese combined (64.9%) is significantly higher than Ontario (51.4%), and this is likely due to a significantly higher rate of obesity (see Figure 5).

Figure 5. Percent of adult population (95% CI) aged 18 years and over categorized as overweight or obese, 2007.



Data Source: Statistics Canada. 2010. *Health indicator profile*. CANSIM Table 105-0501. Released June 15, 2010. (accessed June 21, 2010).

↑ Rate is significantly higher than Ontario.

↓ Rate is significantly lower than Ontario.

* Rate is significantly different from previous survey cycle.

DEFINITIONS

Pain or discomfort by severity:

Population aged 12 years and over who reported that they usually have pain or discomfort. Severity of pain is measured as severe or moderate.^[2]

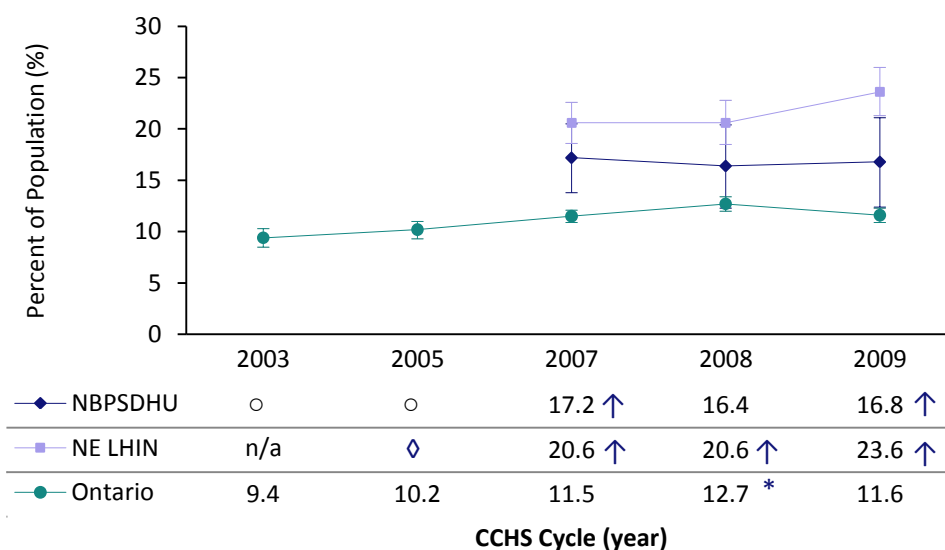
Pain or discomfort that prevents activities:

Population aged 12 years and over who report having pain or discomfort which prevents activities.^[2]

4.4 Pain or Discomfort by Severity

- In 2009, 16.8% of the population (aged 12 years and over) in the NBPSDHU region reported that they usually have moderate or severe pain or discomfort (see Figure 6). This rate is significantly higher than for Ontario (11.6%).
- Within the NE LHIN (17.3%), the percentage of the population (aged 12 years and over) reporting that they usually have moderate or severe pain or discomfort is significantly higher than Ontario.
- For the population aged 65 years and over, 27.8% in the NBPSDHU region reported that they usually have moderate or severe pain or discomfort. This was similar to the NE LHIN (26.3%) and higher than Ontario (20.0%), but not significantly different.

Figure 6. Percent of adult population (95% CI) aged 12 years and over in NBPSDHU region who reported that they usually have pain or discomfort.



Data Source: Statistics Canada. 2010. *Health indicator profile*. CANSIM Table 105-0501. Released June 15, 2010. (accessed June 21, 2010).

↑ Rate is significantly higher than Ontario.

↓ Rate is significantly lower than Ontario.

* Rate is significantly different from previous survey cycle.

n/a 2003 CCHS estimate not available for Local Health Integration Networks (LHINs).

◇ 2005 CCHS estimate no longer available for Local Health Integration Networks (LHINs).

○ CCHS estimate not available.

4.5 Pain or Discomfort that Prevents Activities

- In 2009, 16.4% of the population (aged 12 years and over) in the NBPSDHU region reported having pain or discomfort that prevents activities. This rate is similar to Ontario (13.2%) and the NE LHIN (17.4%). The rate for the NE LHIN is significantly higher than Ontario.
- For the population aged 65 years and over, 26.7% in the NBPSDHU region reported having pain or discomfort that prevents activities. This was similar to the NE LHIN (26.3%) and Ontario (22.4%).

DEFINITIONS

Current smoker:

Population aged 12 and over who reported being a current smoker, daily or occasional.^[2]

5.0 HEALTH BEHAVIOURS

5.1 Smoking

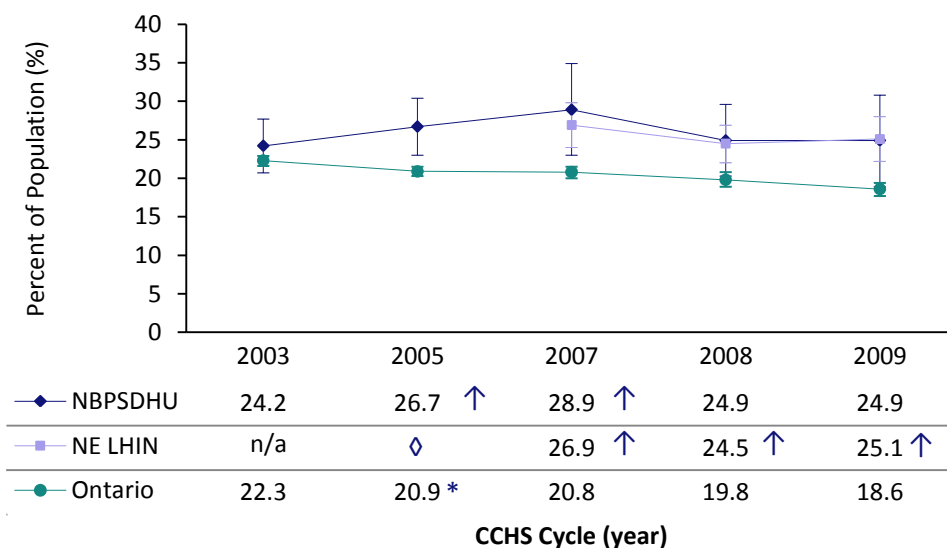
Youth (12-19 years of age):

- In the NE LHIN, 17.4% of youth (12-19 years of age) reported being a current smoker (daily or occasional) in 2009; a rate significantly higher than for Ontario (8.3%).
- *Note: The percent of current youth smokers for the NBPSDHU region in 2009 was not published by Statistics Canada as the survey sample was too small to produce reliable information.*

All Ages (12 years of age and over):

- In 2009, 24.9% of the population within the NBPSDHU region reported being a current smoker (see Figure 7). This rate was higher than for Ontario (18.6%), but not significantly.
- The percentage of current smokers in the NBPSDHU region remained fairly stable from 2003 (24.2%) to 2009, with the largest increase occurring in 2007 (28.9%).
- In the NE LHIN the percentage of current smokers (25.1%) was significantly higher than Ontario (18.6%).

Figure 7. Percent of population (95% CI) aged 12 years and over who reported being a current smoker (daily or occasional).



Data Source: Statistics Canada. 2010. *Health indicator profile*. CANSIM Table 105-0501. Released June 15, 2010. (accessed June 21, 2010).

↑ Rate is significantly higher than Ontario.

↓ Rate is significantly lower than Ontario.

* Rate is significantly different from previous survey cycle.

n/a 2003 CCHS estimate not available for Local Health Integration Networks (LHINs).

◇ 2005 CCHS estimate no longer available for Local Health Integration Networks (LHINs).

DEFINITIONS

Consumption of fruit and vegetables five times or more per day:

Indicates the population aged 12 and over who reported usually eating fruit or vegetables five or more times per day. This measure does not take into account the amount consumed.^[2]

Active or moderately physically active during leisure-time:

Population aged 12 or over who were classified as active or moderately active based on an index of average daily physical activity over the past 3 months. The index is calculated as the sum of the average daily energy expenditures of all leisure-time activities.^[2]

- **Active** = Using 3.0 kcal/kg/day or more; for example, walking 60 minutes per day or jogging 20 minutes per day.
- **Moderately Active** = Using 1.5 to 2.9 kcal/kg/day; for example, walking 30-60 minutes per day or attending a 1 hour-long exercise class 3 times per week.
- **Inactive** = Using less than 1.5 kcal/kg/day; for example, walking less than 30 minutes per day.

5.2 Fruit and Vegetables Consumption

- Within the NBPSDHU region, 44.0% of the population reported eating fruit and vegetables more than five times per day. This rate is similar to Ontario (44.1%) and the NE LHIN (41.4%).
- **Note:** Care should be taken when interpreting this indicator however, as it does not take into account the quantity of fruit and vegetables that are usually consumed. It only measures the number of times that fruit and vegetables are usually eaten in a day.

5.3 Physical Activity

Youth (12-19 years of age)

- Over 70% of youth in 2009 within the NBPSDHU region were categorized as being active or moderately active, based on the nature, frequency, and duration of their reported leisure-time activity over the previous 3 months. This rate is lower than for the NE LHIN (82.8%), but not statistically different, and similar to Ontario (68.9%).
- In the NE LHIN, the percentage of youth categorized as being active or moderately active was significantly higher than Ontario.

All Ages (12 years of age and over):

- In 2009, 56.1% of the population aged 12 years and over were categorized as being active or moderately active (see Table 2), indicating that 43.9% of the population were categorized as being inactive. This rate of being active or moderately active is higher than for Ontario (50.7%), but not statistically different.
- The percent of the population (aged 12 years and over) categorized as being active or moderately active was significantly higher for the NE LHIN (56.6%) than for Ontario.

Table 2. Percent of population (95% CI) aged 12 years and over categorized as being active or moderately physically active.

Health Region	2003	2005	2007	2008	2009
NBPSDHU	51.4 (47.1, 55.7)	51.4 (47.0, 55.8)	51.0 (43.9, 58.1)	59.6 ↑ (53.3, 65.9)	56.1 (49.2, 63.0)
NE LHIN	n/a	◇	51.0 (47.6, 54.3)	54.5 ↑ (51.6, 57.5)	56.6 ↑ (53.3, 59.8)
Ontario	51.4 (50.7, 52.1)	52.9 (52.1, 53.6)	50.0 * (49.0, 51.0)	49.5 (48.4, 50.6)	50.7 (49.6, 51.7)

Data Source: Statistics Canada. 2010. *Health indicator profile*. CANSIM Table 105-0501. Released June 15, 2010. (accessed June 21, 2010).

↑ Rate is significantly higher than Ontario

↓ Rate is significantly lower than Ontario

* Rate is significantly different from previous survey cycle

n/a 2003 CCHS estimate not available for Local Health Integration Networks (LHINs).

◇ 2005 CCHS estimate no longer available for Local Health Integration Networks (LHINs).

DEFINITIONS

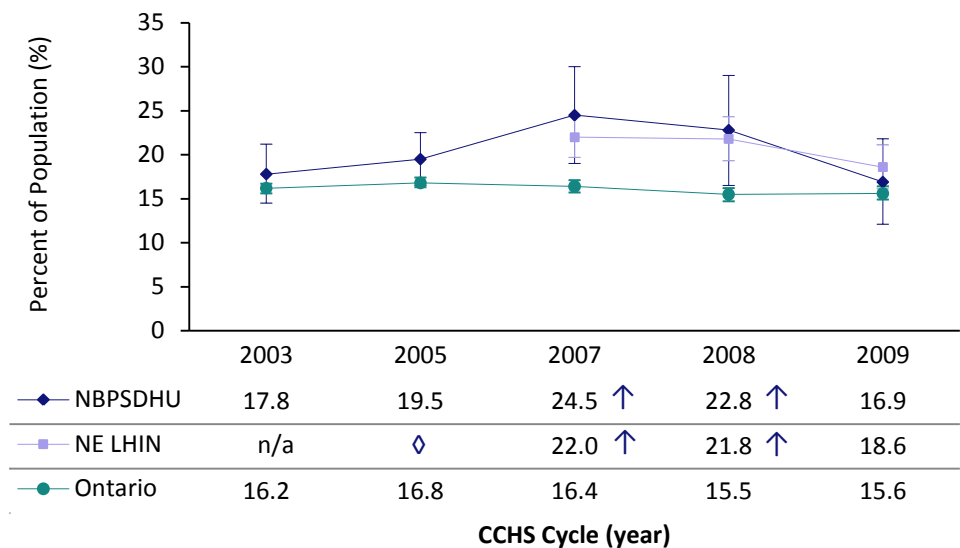
Heavy drinking:

Population aged 12 years or older who reported drinking 5 or more drinks on at least one occasion per month in the past year.^[2]

5.4 Heavy Drinking

- In 2009, 16.9% of the NBPSDHU region population aged 12 years and over reported being a heavy drinker (see Figure 8); this was similar to Ontario (15.6%) and the NE LHIN (18.6%).
- Although the 2008 and 2009 rates for the NBPSDHU region do not differ statistically, the rate for 2009 is almost 6% lower than in 2008 (22.8%).

Figure 8. Percent of population (95% CI) aged 12 years and over who reported drinking 5 or more drinks on one occasion, at least once a month in the past year.



Data Source: Statistics Canada. 2010. *Health indicator profile*. CANSIM Table 105-0501. Released June 15, 2010. (accessed June 21, 2010).

↑ Rate is significantly higher than Ontario.

↓ Rate is significantly lower than Ontario.

* Rate is significantly different from previous survey cycle.

n/a 2003 CCHS estimate not available for Local Health Integration Networks (LHINs).

◇ 2005 CCHS estimate no longer available for Local Health Integration Networks (LHINs).

DEFINITIONS

Exposure to second-hand smoke at home: Non-smoking population aged 12 and over who reported that at least one person smoked inside their home every day or almost every day.^[2]

6.0 ENVIRONMENTAL FACTORS

6.1 Exposure to second-hand smoke at home

Youth (12-19 years of age)

- In the NE LHIN, 23.8% of youth reported being exposed to second-hand smoke at home; this rate was higher than for Ontario (11.9%), but did not differ significantly.
- **Note:** The percent of youth exposed to second-hand smoke at home for the NBPSDHU region in 2009 was not published by Statistics Canada as the survey sample was too small to produce reliable information.

All Ages (12 years of age and over):

- Approximately 8% of the population in the NBPSDHU region in 2009 reported being exposed to second-hand smoke at home (see Table 3); this was similar for the NE LHIN (7.6%).
- Overall, the rate of exposure to second-hand smoke at home in the NBPSDHU region has declined since 2003, and in 2009 was not statistically different from Ontario (5.3%).

Table 3. Percent of population (95% CI) aged 12 years and over exposed to second-hand smoke at home.

Health Region	2003	2005	2007	2008	2009
NBPSDHU	12.3 (9.5, 15.1)	11.9 ↑ (9.0, 14.7)	7.7 E (4.1, 11.4)	9.0 E (4.5, 13.4)	7.8 E (3.0, 12.6)
NE LHIN	n/a	◇	9.6 ↑ (7.7, 11.6)	9.2 ↑ (7.1, 11.4)	7.6 (5.3, 9.8)
Ontario	9.2 (8.7, 9.7)	7.3 * (6.9, 7.7)	5.7 * (5.3, 6.2)	5.9 (5.3, 6.5)	5.3 (4.8, 5.9)

Data Source: Statistics Canada. 2010. *Health indicator profile*. CANSIM Table 105-0501. Released June 15, 2010. (accessed June 21, 2010).

↑ Rate is significantly higher than Ontario.

↓ Rate is significantly lower than Ontario.

* Rate is significantly different from previous survey cycle.

E use with caution. Estimate has high variability due to small sample size.

n/a 2003 CCHS estimate not available for Local Health Integration Networks (LHINs).

◇ 2005 CCHS estimate no longer available for Local Health Integration Networks (LHINs).

DEFINITIONS

Exposure to second-hand smoke in vehicles and public places:

Non-smoking population aged 12 and over who reported being exposed to second-hand smoke in private vehicles and/or public places everyday or almost every day during the past month.^[2]

REFERENCES

1. Statistics Canada. *Canadian Community Health Survey (CCHS): Detailed information for 2009*. Definitions, data sources and methods. 2010 [cited June 23, 2010]; Available from: <http://www.statcan.gc.ca/cgi-bin/imdb/p2SV.pl?Function=getSurvey&SDDS=3226&lang=en&db=IMDB&bg=f&adm=8&dis=2>
2. Statistics Canada, *Health Indicators. Catalogue no. 82-221-XWE*. Vol. 1. June 2010, Ottawa: Statistics Canada.
3. Connor Gorber, S., et al., *A comparison of direct vs. self-report measures for assessing height, weight and body mass index: a systematic review*. *Obes Rev*, 2007. 8(4): p. 307-26.
4. Shields, M., S. Connor Gorber, and M. Tremblay, *Estimates of obesity based on self-report versus direct measures*. Health Reports (Statistics Canada, Catalogue 82-003), 2008. 19(2): p. 61-76.

6.2 Exposure to second-hand smoke in vehicles & public places

Youth (12-19 years of age)

- In 2009, 46.4% of youth in the NBPSDHU region reported being exposed to second-hand smoke in vehicles and/or in public places in the previous month.
- This rate is over 20% higher than the rate reported for Ontario (25.8%) and 9% higher than for the NE LHIN (37.4%), but the differences are not statistically significant.

All Ages (12 years of age and older):

- In 2009, 13.0% of the population in the NBPSDHU region reported being exposed to second-hand smoke either in vehicles and/or in public places in the previous month. This rate is lower than the NE LHIN (14.5%) and Ontario (15.0%), but the differences are not statistically significant.
- In 2009, 9.4 % of the population in the NBPSDHU region reported being exposed to second-hand smoke within a public place, compared to 10.7% in the NE LHIN and 11.2% in Ontario; however, these rates did not differ significantly (see Table 4).
- In 2009, 4.9% of the population in the NBPSDHU region reported being exposed to second-hand smoke within a vehicle, compared to 6.0% in the NE LHIN and 6.4% in Ontario; however, these rates did not differ significantly.

Table 4. Percent of population (95% CI) aged 12 years and over exposed to second-hand smoke within public places.

Health Region	2003	2005	2007	2008	2009
NBPSDHU	22.8 (18.5, 27.0)	14.6 * (11.0, 18.2)	9.6 E (5.2, 13.9)	10.1 E (5.3, 14.9)	9.4 E (3.9, 14.8)
NE LHIN	n/a	◇	10.6 * (8.4, 12.8)	13.3 (11.0, 15.6)	10.7 (8.0, 13.4)
Ontario	17.9 (17.3, 18.5)	13.1 * (12.5, 13.6)	11.7 (10.8, 12.5)	11.3 (10.4, 12.1)	11.2 (10.3, 12.0)

Data Source: Statistics Canada. 2010. *Health indicator profile*. CANSIM Table 105-0501. Released June 15, 2010. (accessed June 21, 2010).

↑ Rate is significantly higher than Ontario.

↓ Rate is significantly lower than Ontario.

* Rate is significantly different from previous survey cycle.

E use with caution. Estimate has high variability due to small sample size.

n/a 2003 CCHS estimate not available for Local Health Integration Networks (LHINs).

◇ 2005 CCHS estimate no longer available for Local Health Integration Networks (LHINs).

APPENDIX A

